



A NEW WAY TO SCAN THE WORLD



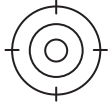
FJD Trion™ S1

3D LiDAR SCANNER

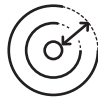
Standard Pro

A NEW WAY TO SCAN THE WORLD

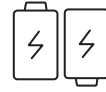
With an industry-leading SLAM algorithm, S1 and S1 Pro can quickly capture high-quality scans, while processing and displaying accurate point clouds on the mobile terminal in real-time.



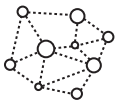
2 cm
Accuracy



120 m
Range @ 90% reflectivity



Dual Battery
Hot-swappable



Real-Time Point
Cloud

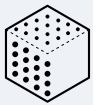


Indoor & Outdoor
Scanning



Lightweight
and Portable

S1

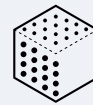


320,000
Points per second



16
Sensors

S1 Pro



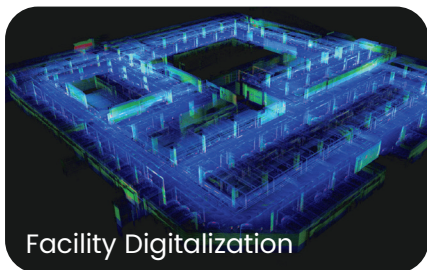
640,000
Points per second



32
Sensors

APPLICATION SCENARIOS

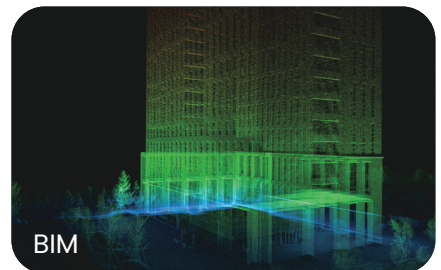
Indoor, outdoor and even underground without a GNSS receiver.



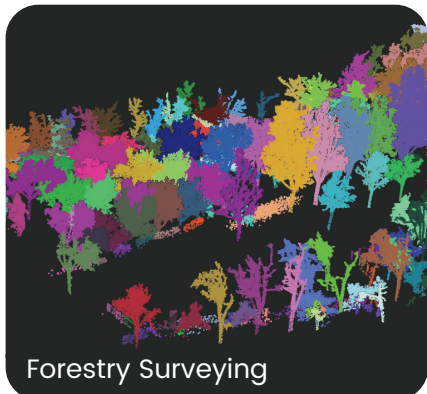
Facility Digitalization



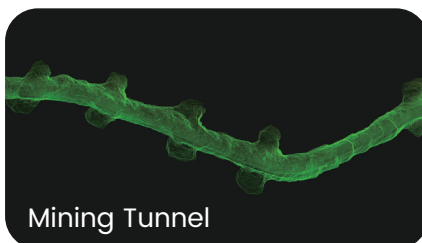
Heritage Conservation



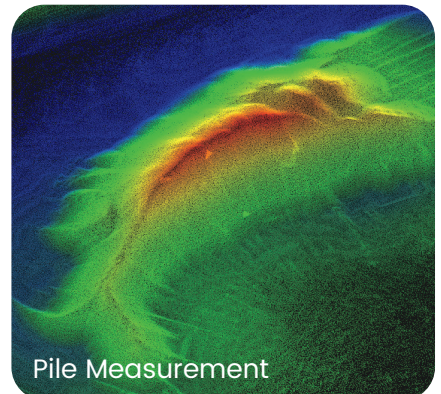
BIM



Forestry Surveying



Mining Tunnel



Pile Measurement

AS VERSATILE AS IT IS PORTABLE

Lightweight design for easy portability.
Real-time point cloud display and SLAM processing.



YOUR POINT CLOUD STUDIO



FJD TRION SCAN

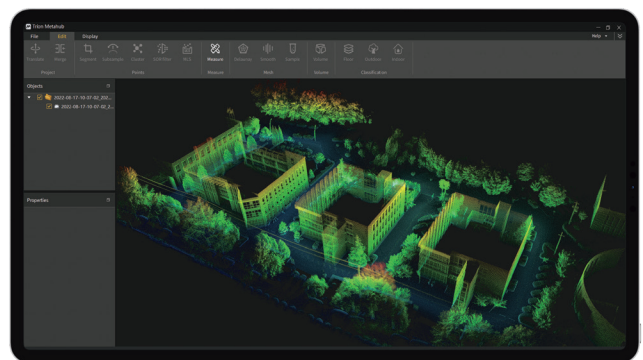
Real-Time Visualization of 3D Point Clouds Software

- Displays the scanned project files, storage capacity, and battery life
- Visualizes the point cloud in real-time
- Tracks real-time path
- Manages and downloads the project files

FJD TRION MODEL

Point Cloud Post-Process Software

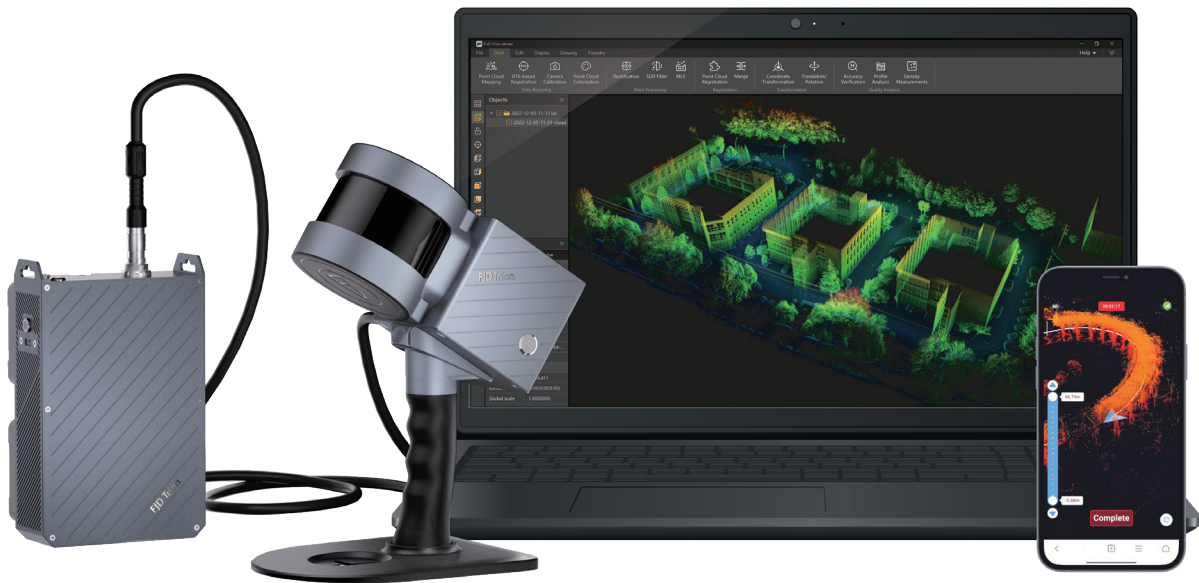
- Denoises and colorizes point clouds
- Stitches point clouds, maps shadow, transforms coordinates, and does automatic plane fitting
- Classifies point clouds, produces 2D drawings, and builds 3D models



QUICK SPECS

	S1	S1 Pro
Range	120 m @ 90% reflectivity	120 m @ 90% reflectivity
FOV	360° × 270°	360° × 270°
Points per Second	320,000	640,000
Display	Real-time preview on mobile terminal	Real-time preview on mobile terminal
Datalogger Weight (incl. single battery)	2.2 kg	2.2 kg
Battery Life (Dual battery)	4 hours	4 hours
Ingress Protection	IP 54	IP 54
Sensors	16	32
Laser Class	Class 1 / λ 905 nm	Class 1 / λ 905 nm
Relative Accuracy	2 cm*	2 cm*
Processing	Real-time	Real-time
Carrier	Backpack or shoulder strap	Backpack or shoulder strap
Scanner Weight	1.8 kg	1.8 kg
Storage Capacity	512 GB	512 GB

*Measured in experimental environment



Free Quote: sales.global@fjdynamics.com
 Address: 15 SCOTTS ROAD #03-12, Singapore

FJDynamics.com



CREATE FOR A BETTER WORLD

Copyright © 2022 FJDynamics. All rights reserved.